



## Features

- One piece, easy installation.
- Can be mounted on nearly any surface: wall or ceiling.
- Die-cast aluminum construction - light and sturdy.
- Color temperatures 3000K/4000K/6000K available.
- Optional rod pendant mounted allows lighting to get closer to the projection object.
- AC Models compatible with AC voltage worldwide.
- DC Models compatible with 11-15V, 22-30V DC.
- There are 4 different models under this series: non-dimmable, 3-in-1 dimmable , AC-TRIAC dimmable, and DC input.



## Specifications

### GL-DL06-SM (Non-Dimmable)

Type	GL-DL06-SM-WW	GL-DL06-SM-NW	GL-DL06-SM-CW
Energy Used	10.9 W		
Rated Life	30,000 Hours		
Input Voltage	100-240V AC (Driver with cUL Certificate)		
Power Factor (PF)	0.88 at 120V AC, 0.8 at 240V AC		
CCT (color)	3000K	4000K	6000K
Luminous Flux	900 lm	920 lm	980 lm
System Efficacy	83 lm/W	84 lm/W	90 lm/W
CRI (Minimum)	80	80	80
Beam Angle	110°		
Dimension	Φ 180 x 40 mm		
IP Rating	IP40		
Operation Temperature	-20°C ~ +40°C		
Bundled Driver	GP-HS10P-36C (350mA, 24~36Vdc), GP-HS10P-36C2 (350mA, 20~36Vdc)		
Net Weight	550 g (with driver)		
Package	10 Boxes / Carton		

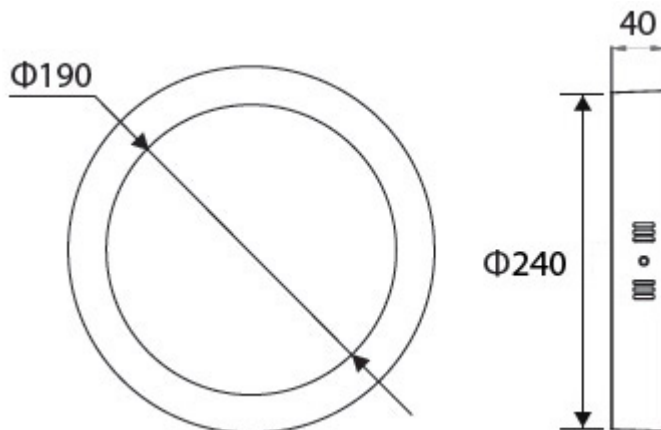
### GL-DL06DA-SM (DC- Dimmable 1-10V/ PWM/ Resistor)

Type	GL-DL06DA-SM-WW	GL-DL06DA-SM-NW	GL-DL06DA-SM-CW
Energy Used	10.9 W		
Rated Life	30,000 Hours		
Input Voltage	100-240V AC		
Power Factor (PF)	0.88 at 120V AC, 0.8 at 240V AC		
CCT (color)	3000K	4000K	6000K
Luminous Flux	900 lm	920 lm	980 lm
System Efficacy	83 lm/W	84 lm/W	90 lm/W
CRI (Minimum)	80	80	80
Beam Angle	110°		
Dimension	Φ 180 x 40 mm		
IP Rating	IP40		
Operation Temperature	-20°C ~ +40°C		
Bundled Driver	GP-HS10P-36CA (for 1-10V/PWM/Resistor) (Driver Output : Constant Current 350mA, 36V)		
Net Weight	550 g (with driver)		
Package	10 Boxes / Carton		

### DL06Dx-SM (AC-TRIAC dimmable)

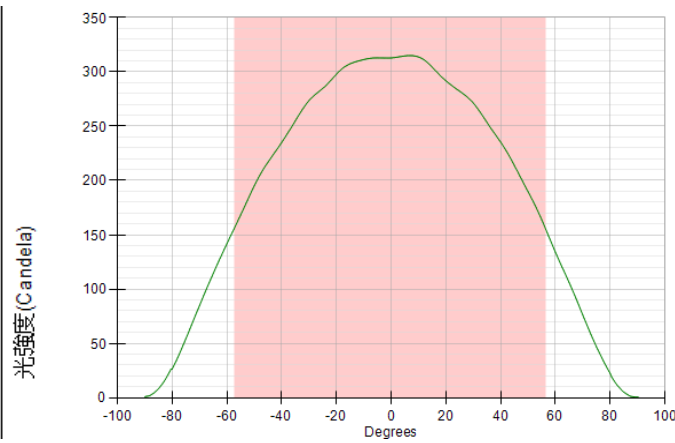
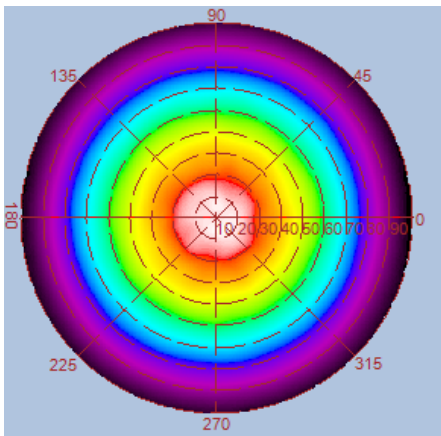
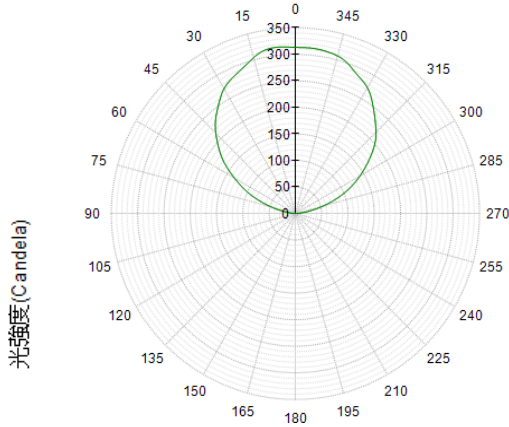
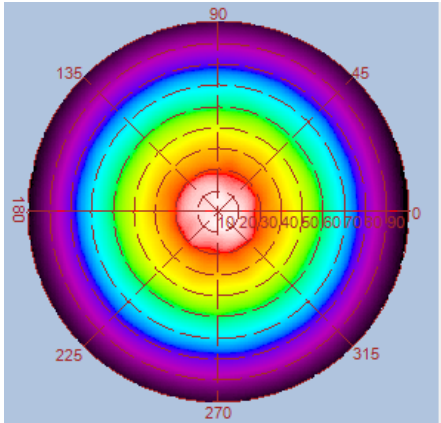
Type	GL-DL06DL-SM-WW GL-DL06DH-SM-WW	GL-DL06DL-SM-NW GL-DL06DH-SM-NW	GL-DL06DL-SM-CW GL-DL06DH-SM-CW
Energy Used	10.9 W		
Rated Life	30,000 Hours		
Input Voltage	100-120V AC (GL-DL06DL-SM) 200-240V AC (GL-DL06DH-SM)		
Power Factor (PF)	0.8 at 120V AC / 0.7 at 240V AC (without dimmer)		
CCT (color)	3000K	4000K	6000K
Luminous Flux	900 lm	920 lm	980 lm
System Efficacy	83 lm/W	84 lm/W	90 lm/W
CRI (Minimum)	80	80	80
Beam Angle	110°		
Dimension	Φ 180 x 40 mm		
IP Rating	IP40		
Operation Temperature	-20°C ~ +40°C		
Bundled Driver	GP-TS10P-30L (for AC-TRIAC 100-120V AC) GP-TS10P-30H (for AC-TRIAC 200-240V AC) (Driver Output : Constant Current 350mA, 30V)		
Net Weight	550 g (with driver)		
Package	10 Boxes / Carton		

### Outline / Dimension

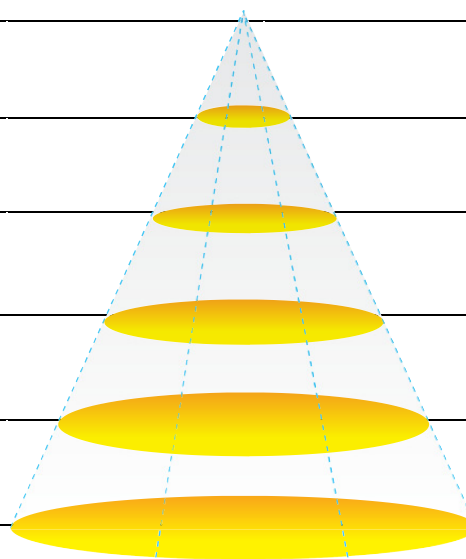


## Luminous Intensity Distribution Diagram

GL-DL06 -SM-WW/ CCT : 3000K

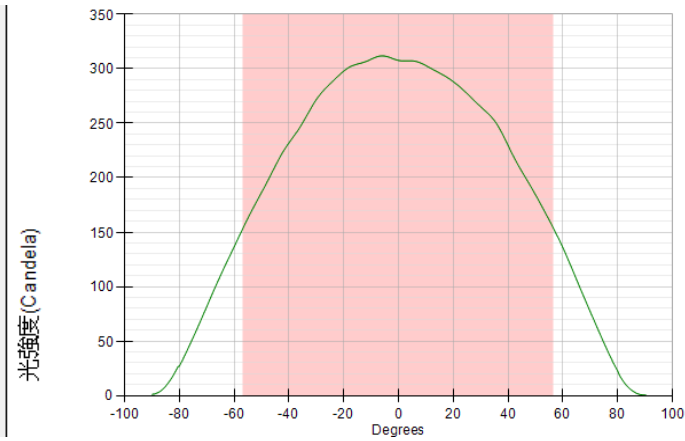
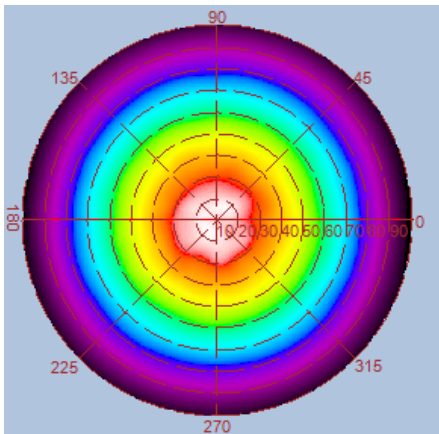
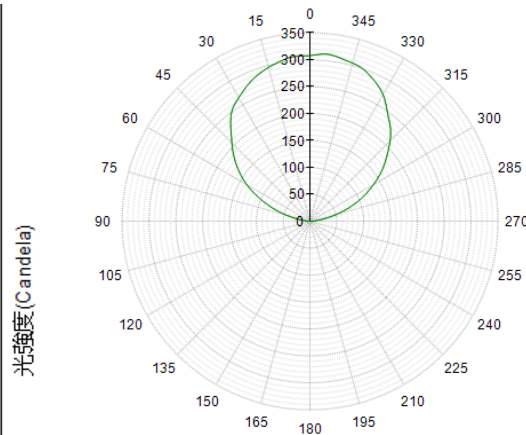
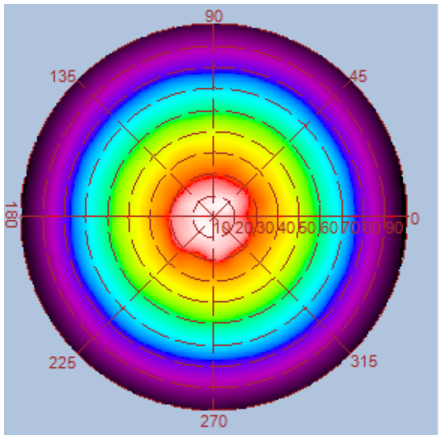


Height	E Avg.	E Max.	Diameter
1.0M	152 Lx	341 Lx	307 cm
2.0M	37 Lx	81 Lx	615 cm
3.0M	16 Lx	35 Lx	923 cm
4.0M	9 Lx	19 Lx	1231 cm
5.0M	5 Lx	12 Lx	1529 cm

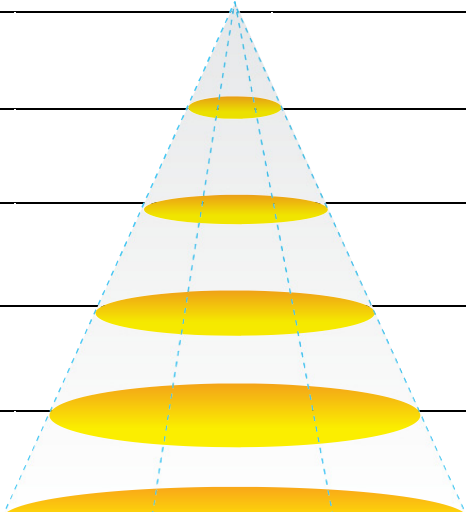


## Luminous Intensity Distribution Diagram

GL-DL06 -SM-NW/ CCT : 4000K



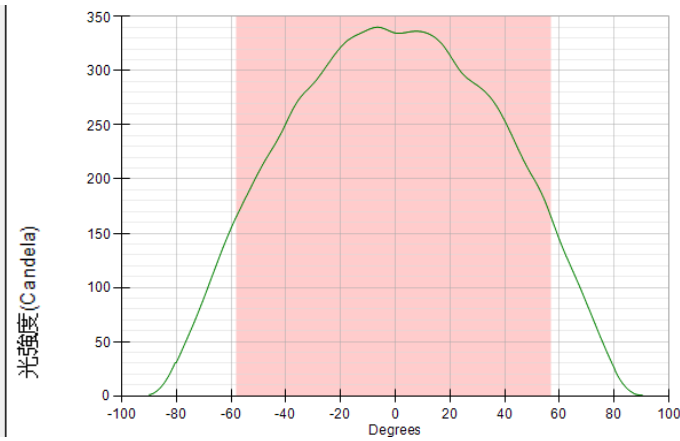
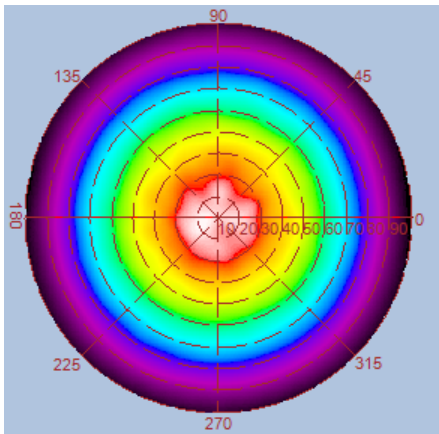
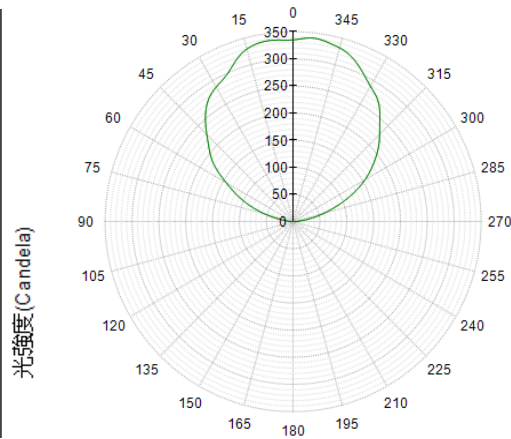
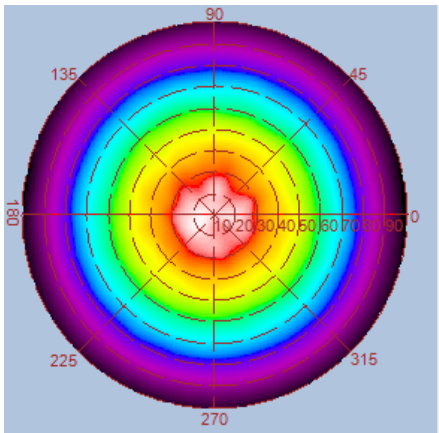
Height	E Avg.	E Max.	Diameter
1.0M	151 Lx	337 Lx	305 cm
2.0M	36 Lx	79 Lx	610 cm
3.0M	16 Lx	34 Lx	915 cm
4.0M	9 Lx	19 Lx	1220 cm
5.0M	5 Lx	12 Lx	1525 cm



A diagram showing a light cone with horizontal cross-sections at different heights, corresponding to the data in the table. The cross-sections are yellow ellipses that increase in diameter as the height increases.

## Luminous Intensity Distribution Diagram

GL-DL06-SM -CW /CCT : 6000K



Height	E Avg.	E Max.	Diameter
1.0M	160 Lx	366 Lx	313 cm
2.0M	38 Lx	86 Lx	627 cm
3.0M	17 Lx	37 Lx	941 cm
4.0M	9 Lx	20 Lx	1255 cm
5.0M	6 Lx	13 Lx	1569 cm

