

Features

- One piece, easy installation
- Can be mounted on nearly any surface: wall or ceiling
- Optional rod pendant mounted
- Die-cast aluminum construction - light and sturdy
- Color temperatures 3000K/4000K/6000K available
- Compatible with AC voltage worldwide
- High efficacy LED, up to 96 lm/W

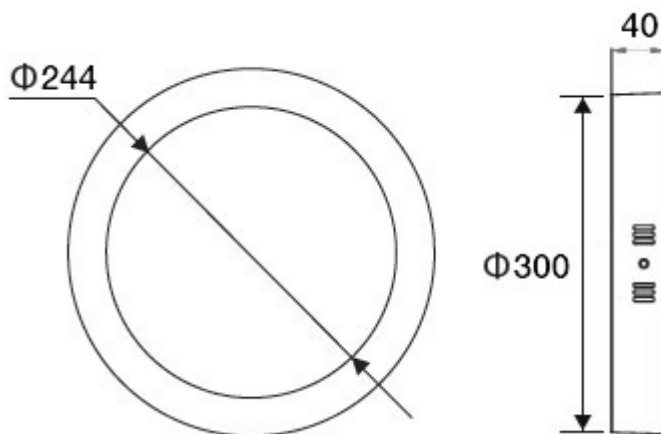


Specifications

GL-DL10-SM (non-dimmable)

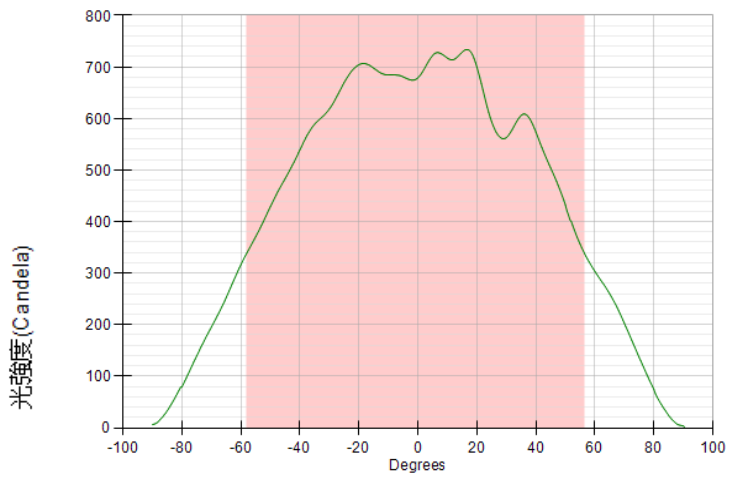
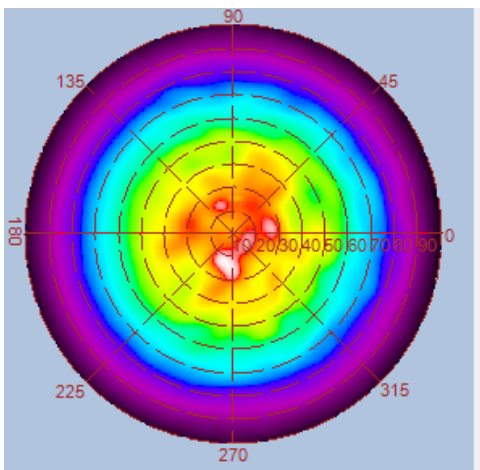
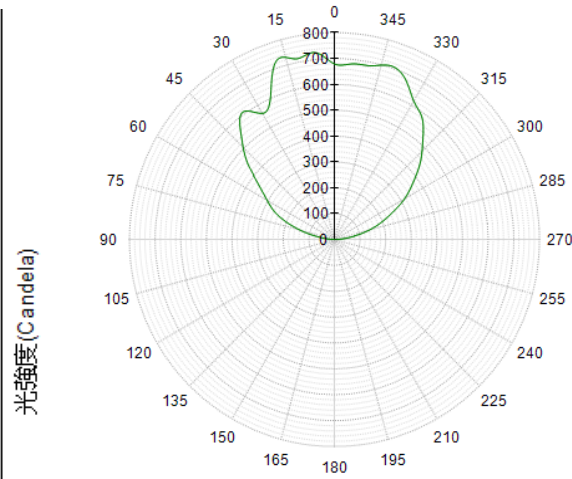
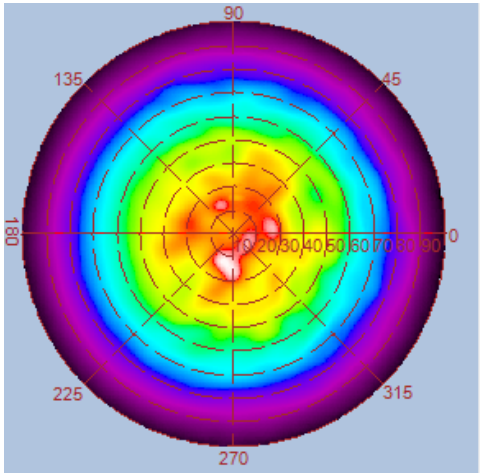
| Type | GL-DL10-SM-WW | GL-DL10-SM-NW | GL-DL10-SM-CW |
|-----------------------|---|---------------|---------------|
| Energy Used | 24W | | |
| Rated Life | 30,000 Hours | | |
| Input Voltage | 100-240V AC Driver with CUL Certificate Support 277V AC for North America only | | |
| Power Factor (PF) | 0.9 at 120V AC, 0.85 at 240V AC | | |
| CCT (color) | 3000K | 4000K | 6000K |
| Luminous Flux | 2080 lm | 2200 lm | 2300 lm |
| System Efficacy | 87 lm/W | 92 lm/W | 96 lm/W |
| CRI (Minimum) | 80 | 80 | 80 |
| Beam Angle | 110° | | |
| Dimension | Φ 300 x 40mm | | |
| IP Rating | IP20 | | |
| Operation Temperature | -20°C ~ +40°C | | |
| Bundled Driver | HS25P-36C (Driver Output : Constant Current 700mA, 21~36V) | | |
| Net Weight | 1.3 kg (with driver) | | |
| Package | 10 Boxes / Carton | | |

Outline / Dimension

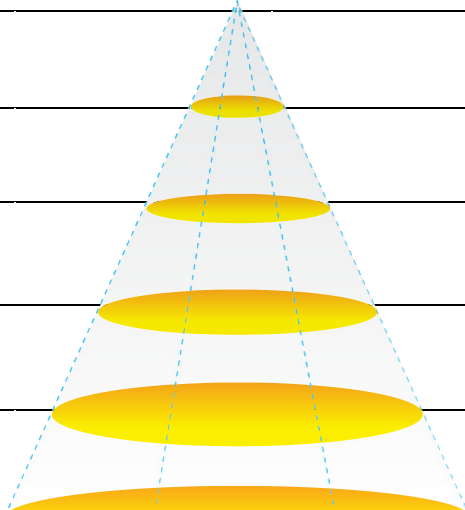


Luminous Intensity Distribution Diagram

GL-DL10-SM-WW/ CCT: 3000K

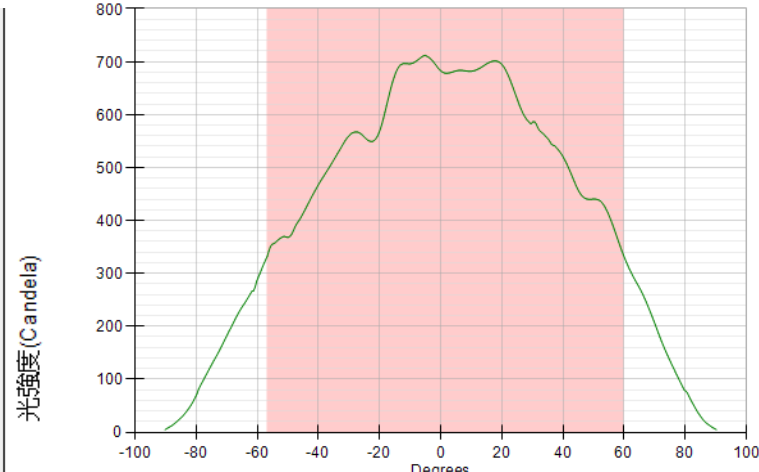
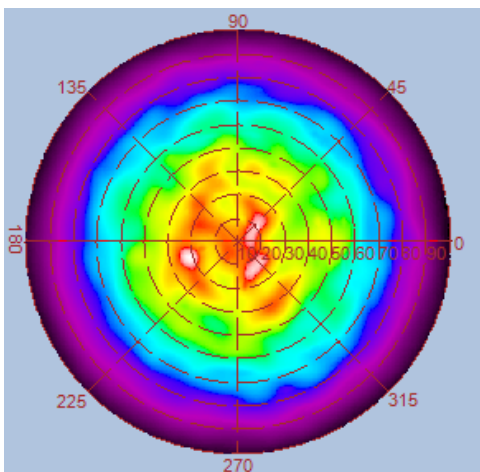
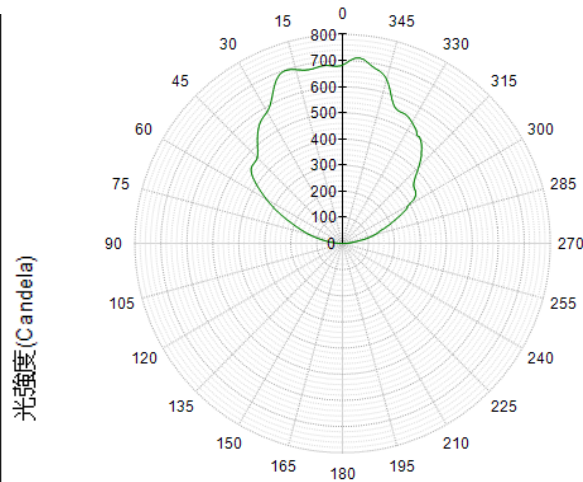
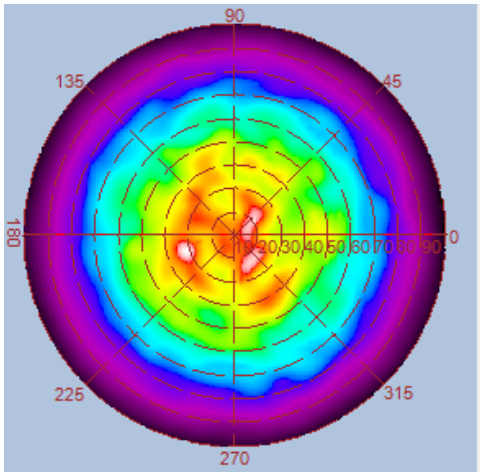


| Height | E Avg. | E Max. | Diameter |
|--------|--------|--------|----------|
| 1.0M | 342 Lx | 758 Lx | 310 cm |
| 2.0M | 82 Lx | 178 Lx | 621 cm |
| 3.0M | 36 Lx | 78 Lx | 932 cm |
| 4.0M | 20 Lx | 43 Lx | 1243 cm |
| 5.0M | 13 Lx | 27 Lx | 1554 cm |

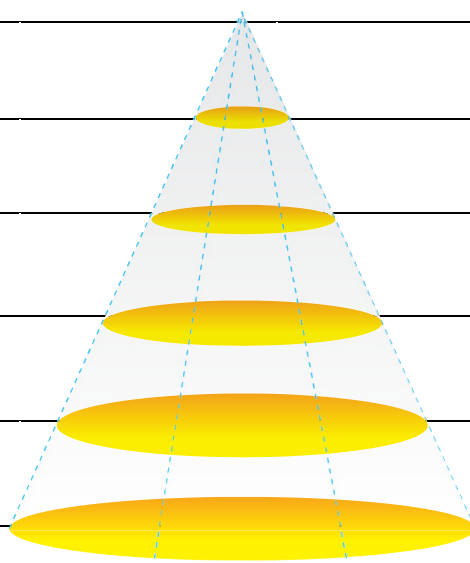


Luminous Intensity Distribution Diagram

GL-DL10-SM-NW/ CCT: 4000K

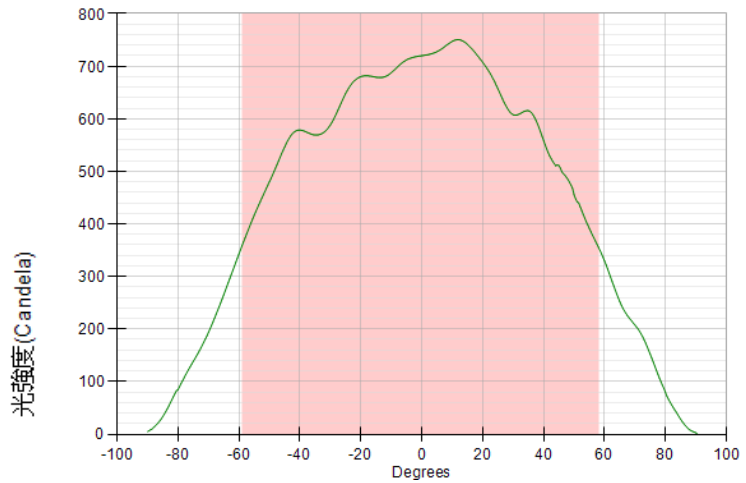
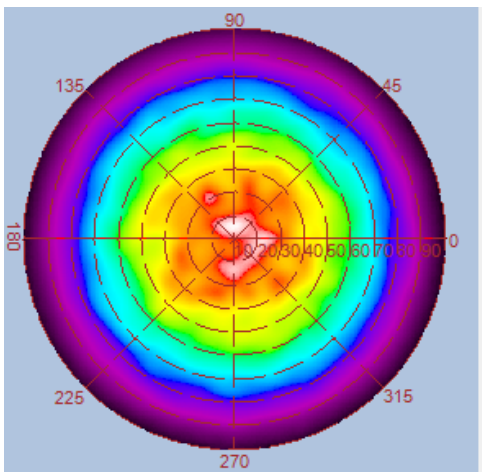
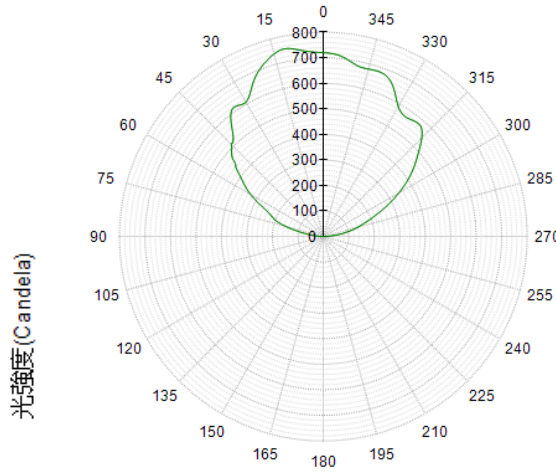
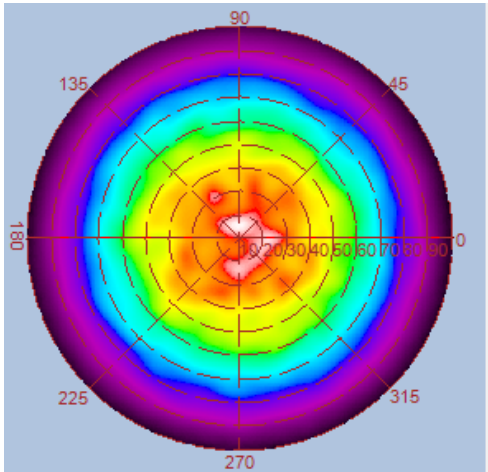


| Height | E Avg. | E Max. | Diameter |
|--------|--------|--------|----------|
| 1.0M | 314 Lx | 751 Lx | 320 cm |
| 2.0M | 75 Lx | 180 Lx | 640 cm |
| 3.0M | 33 Lx | 78 Lx | 960 cm |
| 4.0M | 18 Lx | 43 Lx | 1280 cm |
| 5.0M | 11 Lx | 28 Lx | 1600 cm |

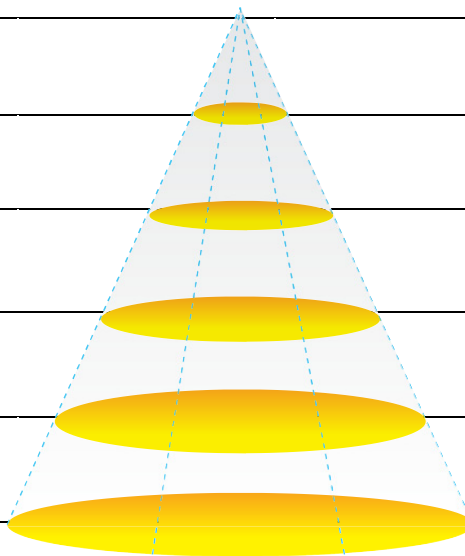


Luminous Intensity Distribution Diagram

GL-DL10-SM-CW/ CCT: 6000K



| Height | E Avg. | E Max. | Diameter |
|--------|--------|--------|----------|
| 1.0M | 337 Lx | 789 Lx | 326 cm |
| 2.0M | 81 Lx | 187 Lx | 652 cm |
| 3.0M | 35 Lx | 81 Lx | 979 cm |
| 4.0M | 20 Lx | 45 Lx | 1305 cm |
| 5.0M | 12 Lx | 28 Lx | 1631 cm |



Package



With metal rod mounted

